



**康联科电子**  
**CACTUS ELECTRONICS**

- Custom Wire Harness Expert.
- 3C Standards: Custom, Consistent, Certified.
- On-Time, Every Time.
- No Headaches All The Way!

-Committed to design and manufacture high-quality loV wire harnesses

-Create value for customers

-The success of customers is the foundation of enterprise survival



Located in Shenzhen City, Guangdong Province, Cactus Electronics Co., Ltd. is a professional wire harness manufacturer. Our products are mainly used in automotive, commercial truck, medical, industrial control and related industries. We provide high-quality, stable and continuous working wire harnesses and connectors to meet customer demands.

Obtained ISO9001 / IATF16949 / UL international certificates, QC personnel to production personnel rate reaches 1:3

With a full set of wire harness automation equipments, more than 100 skilled production employees

Provide wire harness customization for over 1,000 customers around the world, with an annual production of more than 5 million sets of harnesses

Production workshop is 3,000 square meters, and more than 3,000 of different materials required for wire harness production.



## Cactus History

2009

**Shenzhen Cactus Found.**

Cactus established the first factory.

**ISO9001 Certified.**

Through the efforts of each department of the company, we have more standardized operation and development. Cactus was certified to ISO9001.

2012

**Dongguan Cactus Found.**

To meet the needs of our customers, we expanded our production scale and established a second factory in Dongguan.

2019

**Changsha Cactus Found.**

The establishment of the Changsha branch provides the impetus for the company's progress and development. The Changsha branch will become the new R&D center and sales service center of Cactus.

June 2022

August 2022

**Cactus was certified to UL.**

Through continuous efforts, we are certified by UL. This is an endorsement of our products.

**Cactus was certified to IATF16949.**

Our products are well received in the automotive field. Cactus was certified to IATF16949.

November 2022

March 2023

**Huizhou Cactus was Found.**

In order to achieve better production capacity and efficiency, Huizhou Cactus will become the main production base.

## QUALITY CONTROL PROCESS

Cactus was certified by ISO9001, IATF6949, UL. Production of wire harnesses strickly stick to IPC-WHMA-A-620 standards.

QC personnel to production personnel rate goes to 1:3. We are carrying on very strict rules during the whole production process.

The data, pictures and reports obtained in all processes are managed through the ERP system, and all inspection records will be permanently saved.



Partners (for example)

**molex**

**BRP**



**Cal/Amp**

**McLaren**

**BOSCH**



**verizon**



# Production Process



1-Material Inspection



2-Wire Cutting



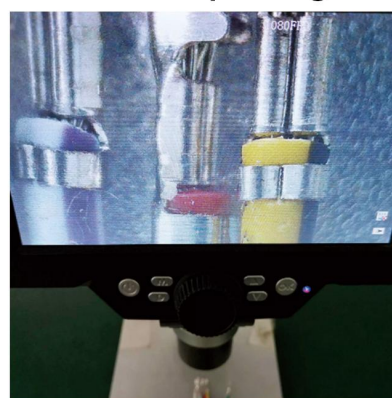
3-Wire peeling



4-Tin Solder



5-Terminal Crimping



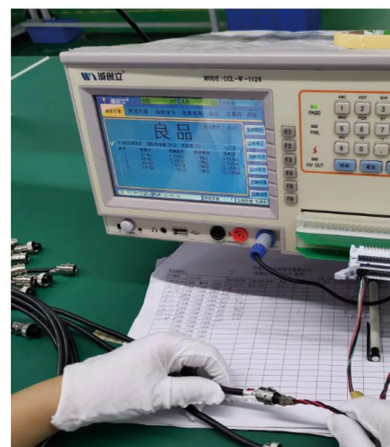
6-Terminal Checking



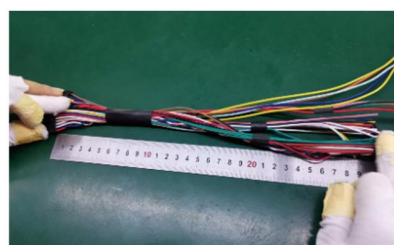
7-Insert Terminal



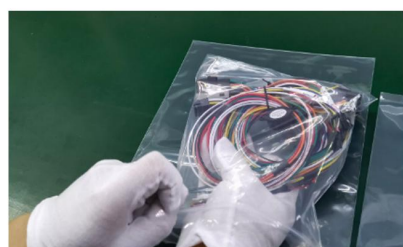
8-Product Molding



9-Product Testing



10-OQC Inspection

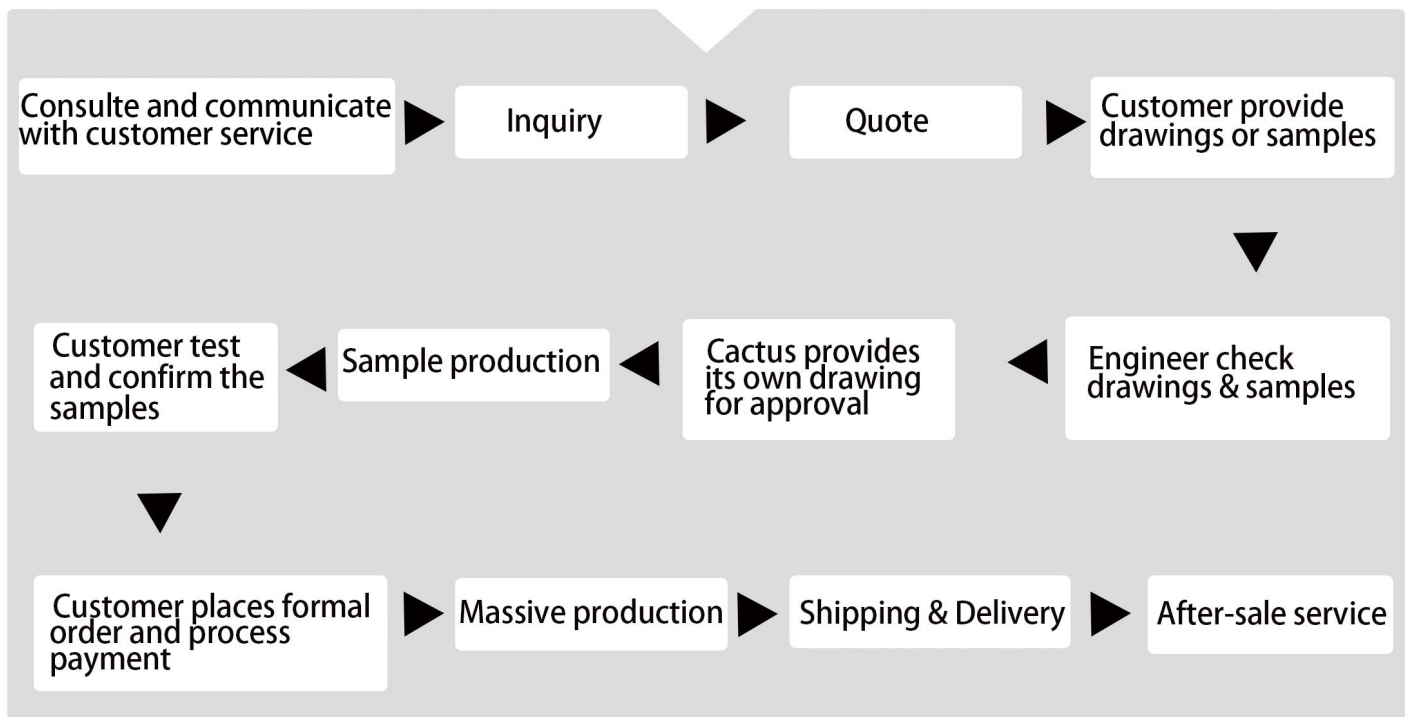


11-Product Packing



Sample display

## Business process



## Reliable Quality Control Throughout The Whole Process

Perform reliability at every step, starting with design

### Material Reliability Test

We have our own dedicated laboratory for performance test and quality control of the raw materials at the very beginning to assure every material used is qualified.

### Terminal/Connector Reliability Selection

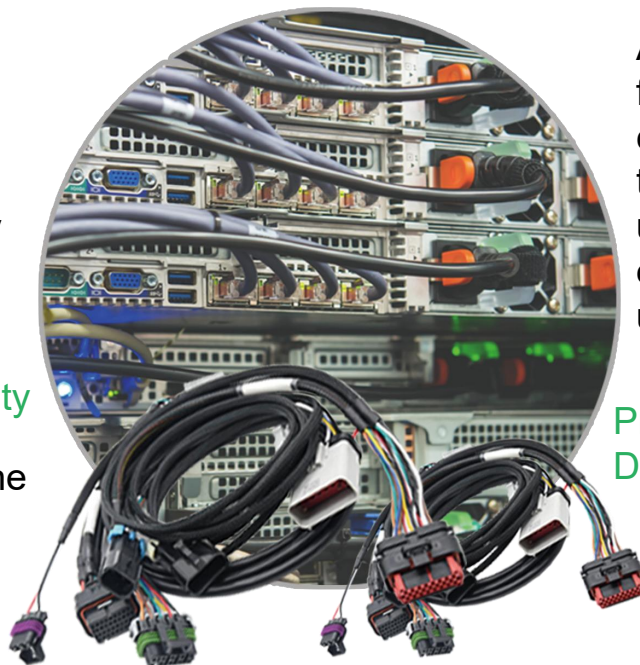
After analyzing the main faults of terminals and connectors, different types of connectors are used for different equipments in different usage environments.

### Electrical System Reliability Design

According to function of the product, through reasonable improvement and combination of lines and components, differentiated and modularized processing, in order to reduce the loop and improve the reliability of the electrical system.

### Production Process Reliability Design

Design the best processing technology according to the product structure, usage and characteristic requirements, and ensure the key dimensions and related requirements of the product through molds and tooling.





## OBD2 Cable

OBD2 Extension Cable



OBD2 Splitter Cable



OBD2 Right Angle Extension Cable



OBD2 Extension with DB9 Cable



OBD2 to Inside Equipment Cable



OBD2 to RJ45 Right-angle Cable



OBD2 to Open Cable



OBD2 Dual to Open Cable



OBD2 Dual Flat Cable 1M



OBD2 Extention Flat Cable



## Fleet Telematics Cable

J1939 Type2 Splitter Cable



J1708 Dual to Open Cable



J1939 Type2 Universal to OBD2 Female Cable



Fleet Management System Cable for Europe



RP1226 to J1939 Type1 Cable



OBD2 Universal Splitter Cable



J1939 Type1 Y Cable for CalAmp 5C9095-2



Connectorised Harness for CalAMP LMU3640 5C360



J1939 Type2 9Pin for CalAmp jPOD 5C992-2



Splice-in 5-Wire Power Starter Disable Kit for CalAmp 5C862



OBDII T-harness for the GO device HRN-BS16T2



14-pin harness for vehicles HRN-DC14S2



## FAKRA Cable

Fakra Z Female to Male  
Vehicle Antenna  
Extension Cable



Fakra Z 4-in-1 for 360  
Camera Cable



Fakra Z Splitter Cable



## Waterproof Circular Cable

RS-232 to M8 Female  
and USB A Male Cable



M12 2Pin Extension  
Cable



M12 Female Straight  
5Pins Cable



## Truck Diagnostic Cable

DB15 to Deutsch 9P  
and 6P 405048 Cable



HDB26 to Cat 14Pin  
Cable



HDB26 to Deutsch 9P  
and 6P Cable



## HV/EV Cable

Custom EV Cable 01



Custom EV Cable 02



Custom EV Cable 03



Custom EV Cable 04





# Solar Photovoltaic Cable

MC4 to XT60 Solar Cable  
3M



MC4 Extension Cable  
10AWG



MC4 Splitter Y Cable



MC4 to DC Cable



MC4 to SAE 2P Cable



# Sensor Cable / Actuator Cable

M8 6Pin male to female,  
right angled, molded  
6x26AWG PVC cable



M12 8Pin male - M12 A-  
Code 8Pin male, molded  
Cable



M12 Sensor 4Pin Male to  
Female Cable



# Electric Bike Cable

Electric Bike M8 Waterproof 2-6Pin Cable



Electric Bike 8Pin 1T4 Main Wire Harness Cable



Electric Bike M8 2Pin Extension Cable



# ECU/TCU Cable

ECU Cable



ECU 64Pin to OBD2 Female and DC Cable



ECU CAN Main Cable



ECU 94Pin to Open Cable



ECU 36Pin to Open Cable



ECU 96Pin to Open Cable



# SCR Diagnostics Cable

SCR 12Pin Cable



SCR 20Pin to 2Pin Cable



SCR 14Pin Cable



SCR 37Pin Cable



SCR 12Pin Cable



SCR 16Pin Cable



SCR 35Pin CABLE



SCR 23Pin Cable



SCR 14Pin Cable



SCR 19Pin Cable



SCR NOx Cable



SCR Sensor Cable





# Dash Camera Cable

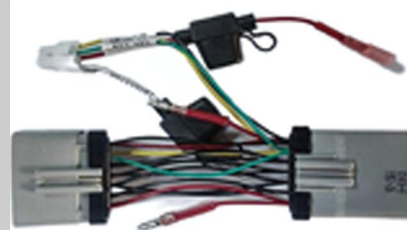
4.2 Housing 6P with Fuse Dash Cam Cable



J1939 Type2 9Pin Green Dash Cam Cable



RP1226 Dash Cam Cable



DT06-2S to DT04-2P Dash Cam Cable



J1939 Type1 9Pin Dash Cam Cable



OBD2 16Pin Dash Cam Cable



12-24V to 5V OBD2 to USB Mini A 90 Degree Cable



12-24V to 5V from Fuse Box to USB Mini Male Cable



High-definition Camera 4 Pin Cable / HD Camera 4 Pin Cable



# OBD2 Connector

OBD2 Male Connector for PCB



OBD2 Male Right-angle 90 Degree Connector for PCB



OBD2 Male Right-angle 90 Degree Connector with PCB



OBD2 16pin Female Connector



OBD2 16pin Female Connector for RENAULT



OBD2 Male 16Pin Connector



OBD2 Male Connector



# J1939 Connector / J1708 Connector / RP1226 Connector

RP1226 Plug 54201416



J1939 Type2 Plug



J1939 Type2 Receptacle



J1939 Type2 Receptacle



J1939 Type1 Plug



J1939 Type1 Receptacle



J1939 14Pin Plug for CAT



J1708 Plug Socket 6Pin  
Circular Heavy Duty  
Connector



J1708 Receptacle Socket  
6Pin Circular Heavy Duty  
Connector





## Headers & Wire Housing

Molex 3.0 Pitch Series



DEUTSCH DT04,06  
without Tail



DEUTSCH DT04,06  
with Tail



## Waterproof Circular Connector

M8 Bayonet or Insta-Click Positive Lock 8 Pin Plug



M8 Bayonet or Insta-Click Positive Lock 8 Pin Receptacle



M18 Bayonet or Insta-Click Positive Lock 12 Pin Plug



M18 Bayonet or Insta-Click Positive Lock 12 Pin Receptacle



## ECU/TCU Connector

35 Pin Plug ECU  
Connector 776164-1



23 Pin Plug ECU  
Connector 770680-1



## Custom Plastic Enclosure / Custom Connector

Custom Plastic Enclosure



Custom Connector





Sales

[sales@cactus-elec.com](mailto:sales@cactus-elec.com)

TEL: +86 755 2734 8805

FAX: +86 755 8146 2346

Factory location:

3F, 4-5th Building, Xinghe IMC, 333 Zhongkai 6th Road,  
Huizhou, GuangDong Province, China 516029